

Anti-PD1 hIgG1 Reference Antibody (Rosnbio)

Product Information

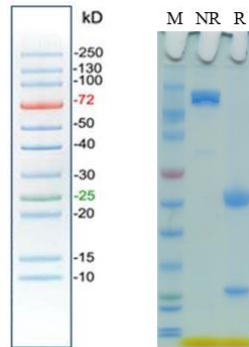
Product Name	Anti-PD1 hIgG1 Reference Antibody (Rosnbio)
Storage temp.	Store at 2-8°C short term (1-2 weeks).Store at $\leq -20^{\circ}\text{C}$ long term. Avoid repeated freeze-thaw.
Catalog# / Size	GM-87930MAB-1mg / 1 mg GM-87930MAB-5mg / 5 mg GM-87930MAB-25mg / 5 mg * 5 vials GM-87930MAB-50mg / 50 mg GM-87930MAB-100mg / 50 mg * 2 vials

Antibody Information

Expression System	CHO
Aggregation	< 5% as determined by SEC-HPLC
Purity	> 95% as determined by SDS-PAGE
Endotoxin	< 1 EU/mg, determined by LAL gel clotting assay
Sterility	0.2 μm Filtered
Target	PD1
Clone	Rosnilimab
Alternative Names	CD279, PD-1, PDCD1, SLEB2, hPD-1, hPD-I, hSLE1
Source/Isotype	Monoclonal Human hIgG1 (KDEL), Kappa
Application	Bioactivity-ELISA; Assay; Flow cytometry
Description	Programmed cell death protein-1 (PD-1) is an inhibitory immune checkpoint primarily expressed by immune cells. In the tumor microenvironment, PD-1 binds to its ligands PD-L1 and PD-L2, inhibiting T cell activation and proliferation, which allows tumor cells to evade immune system surveillance. As a novel agonist, Rosnilimab offers a new approach for T cell immune activation and may open new avenues for the treatment of tumors and autoimmune diseases.
Formulation	phosphate-buffered solution, pH 7.2-7.4.

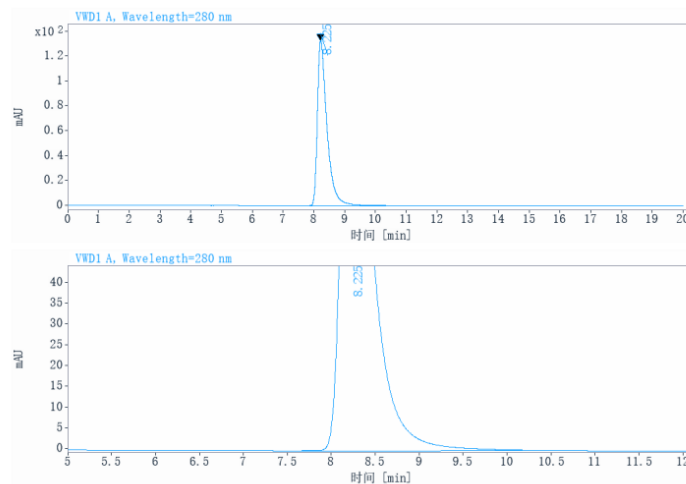
Data Examples

SDS-PAGE



On SDS-PAGE under reducing (R)/non-reducing(N-R) condition. The gel was stained overnight with Coomassie Blue. The purity of the protein is greater than 95%.

SEC-HPLC



The purity of this product is more than 95% verified by SEC-HPLC

Bioactivity-ELISA

Human PD1 Protein; His Tag (Catalog # GM-87593RP) was immobilized at 1 µg/ml (100 µL/well). Increasing concentrations of Anti-PD1 hlgG1 Reference Antibody (Rosnbio) (Catalog # GM-87930MAB) were added.

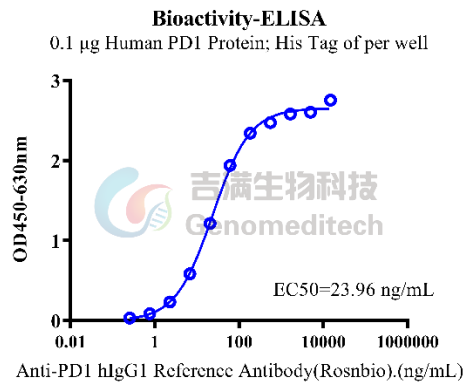


Fig. Assay

Assay

Response to Rosnilimab (Catalog # GM-87930MAB). Serial dilutions of the Rosnilimab was incubated with 1E4 cells/well of the H_CD32B aAPC CHO-K1 Cell Line (Cat. GM-C25754) in a 96-well plate for 1 hour. Subsequently, H_PD-1 Reporter Jurkat Cell Line (Cat. GM-C07928) with a concentration of 1E5 cells/well was added, and the co-culture proceeded for an additional 6 hours in assay buffer (RPMI 1640 + 1% FBS + 1% P.S). Firefly luciferase activity is then measured using the GOne-Step Luciferase Reporter Gene Assay Kit (Cat. GM-040503).

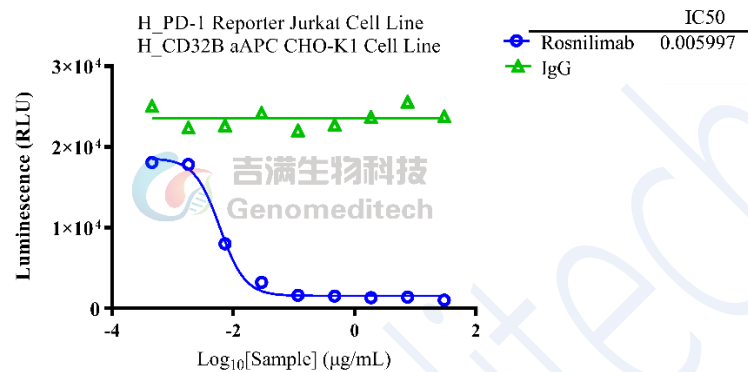


Fig. Assay

Flow cytometry

H_PD-1 Reporter Jurkat Cell Line (Catalog # GM-C07928) was stained with Anti-PD1 hIgG1 Reference Antibody (Rosnbio) (Catalog # GM-87930MAB) or isotype control antibody, followed by anti-Human IgG APC-conjugated Secondary Antibody .

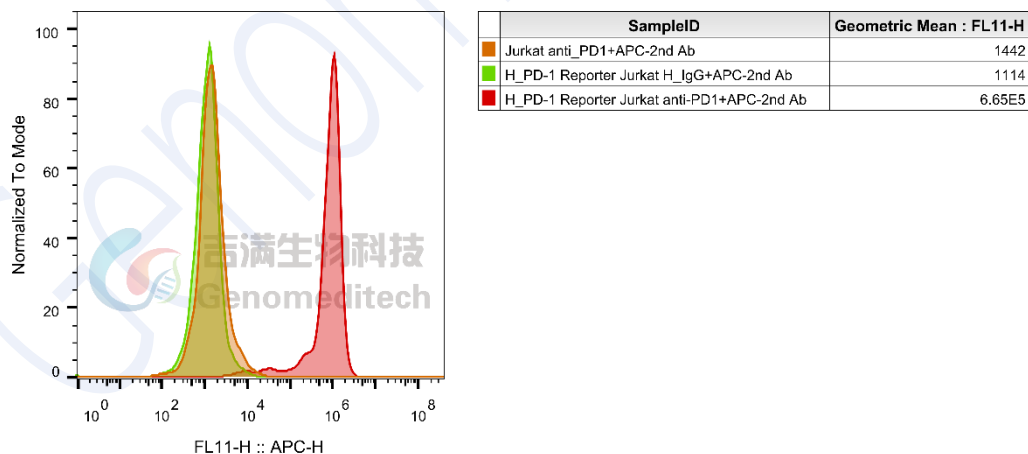


Fig. FACS